

The
future
of

architectural
surfaces

The future of architectural surfaces is here :
MAXIMUM award-winning high performance, pressed porcelain
panels.


Beyond the limits of classical ceramic sizes, beyond traditional
spatial boundaries, this innovative format has been developed &
made in Italy by GranitiFiandre using leading edge technology.
MAXIMUM pressed porcelain provides designers with a unique,
lightweight architectural finish that delivers a beautiful, natural
aesthetic with greater strength & design flexibility.



The Pipers Installation

Marmi Statuario, Nero Supremo & Travertino

Design by Thomas Coward Studio for Sydney In Design event



Maximum design scope

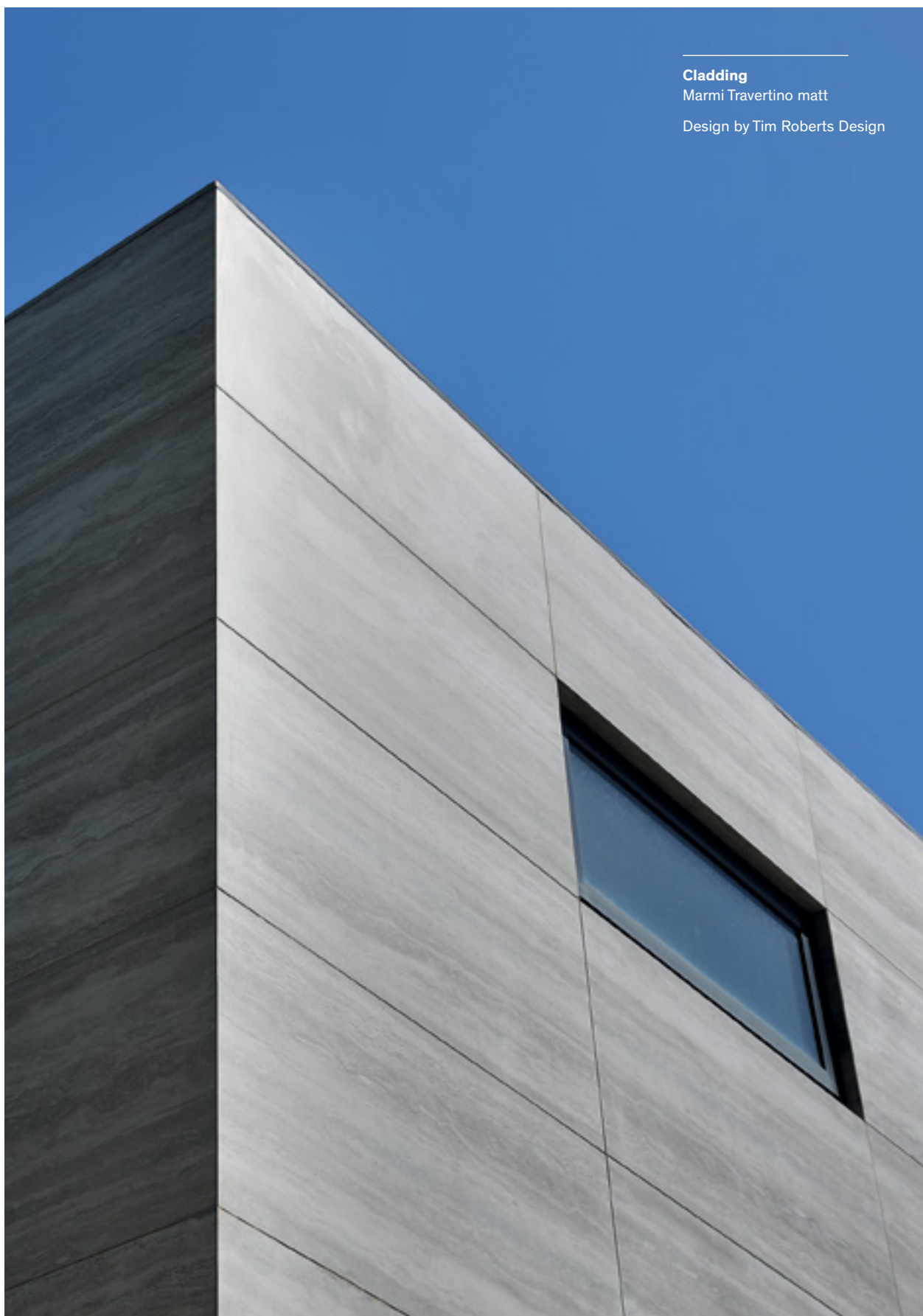
Imagine designing beyond traditional spatial boundaries.

Maximum is the first technical porcelain panel with these extraordinary dimensions: 1.5 metres wide, 3 metres long and just 6mm thin and selected colours available in 1.5 metres wide, 3.2 metres long and 12mm thick. Available in 40 incomparable colours and finishes, Maximum is lightweight, durable, UV stable, environmentally friendly and cost effective, providing limitless design possibilities.

Benchtop & Splashback
Aster Moon 6mm

M House, Melbourne
Design by DKO Architects





Cladding

Marmi Travertino matt

Design by Tim Roberts Design

INFINITE SOLUTIONS

Thin, lightweight (14.67kg/m² or 29.34kg/m²) and easy to use, MAXIMUM pressed porcelain offers limitless design possibilities for interior and exterior commercial, retail and residential projects, from small space renovations through to multi-story ventilated facades.



Benchtop & Splashback
Marmi Statuario matt

Hensley Apartments, Sydney
Design by Woods Bagot

BEAUTIFUL, DURABLE & COST EFFECTIVE

Designed to outperform composite stone and quarry materials, MAXIMUM is UV stable, scratch, thermal shock resistant as well as stain and mould resistant. MAXIMUM is available in more than 40 beautiful colours & textures from finishes inspired by nature, to the cool contemporary look of concrete.



Benchtop & Cupboard Fascias
Datauni Pepper matt 6mm

Summit Display Home
by Beechwood Homes



SUSTAINABLE, SAFE AND 100% NATURAL

MAXIMUM pressed porcelain panels are made entirely from natural materials such as sand, quartz, clay, feldspar and recycled content. State of the art technology and equipment is used to combine these materials in a unique manufacturing process that contains no toxic resins or chemical binders like those used in reconstituted stone products, ensuring no harmful off gassing.

BOOK & VEIN MATCHING

The MAXIMUM Marmi collection captures the luxurious look of marble with its distinctive vein structures and soft colours delivered with the outstanding durability and versatility of a large format, pressed porcelain tile. This extraordinary architectural surface offers an aesthetic that is incredibly similar to that of the finest quarry materials, even offering beautiful book matched pairs and vein matched variations.



Benchtops

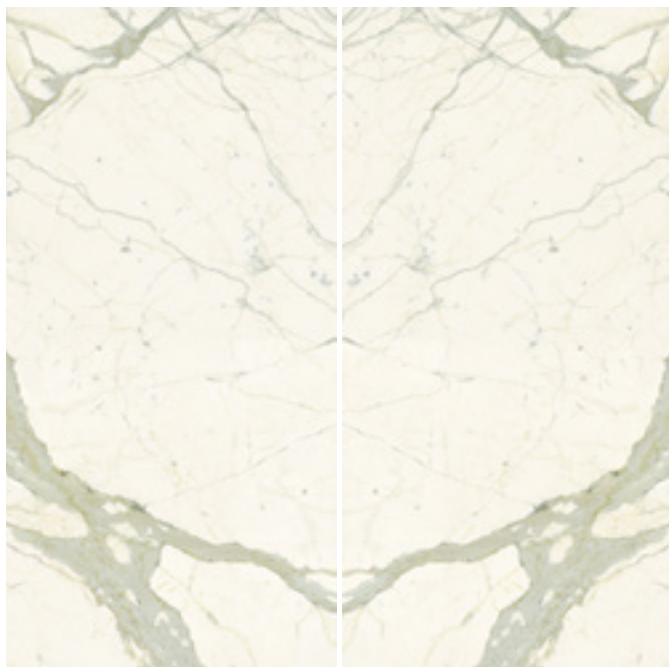
Marmi Statuario 6mm matt & book matched

Vive Cooking School, Sydney
Design by Katherine Chen



Benchtops & Splashback
Marmi Calacatta matt book matched
Astral Apartments, Sydney
Star Entertainment Group Design by Webb +

MARMI CALACATTA BOOK MATCHED

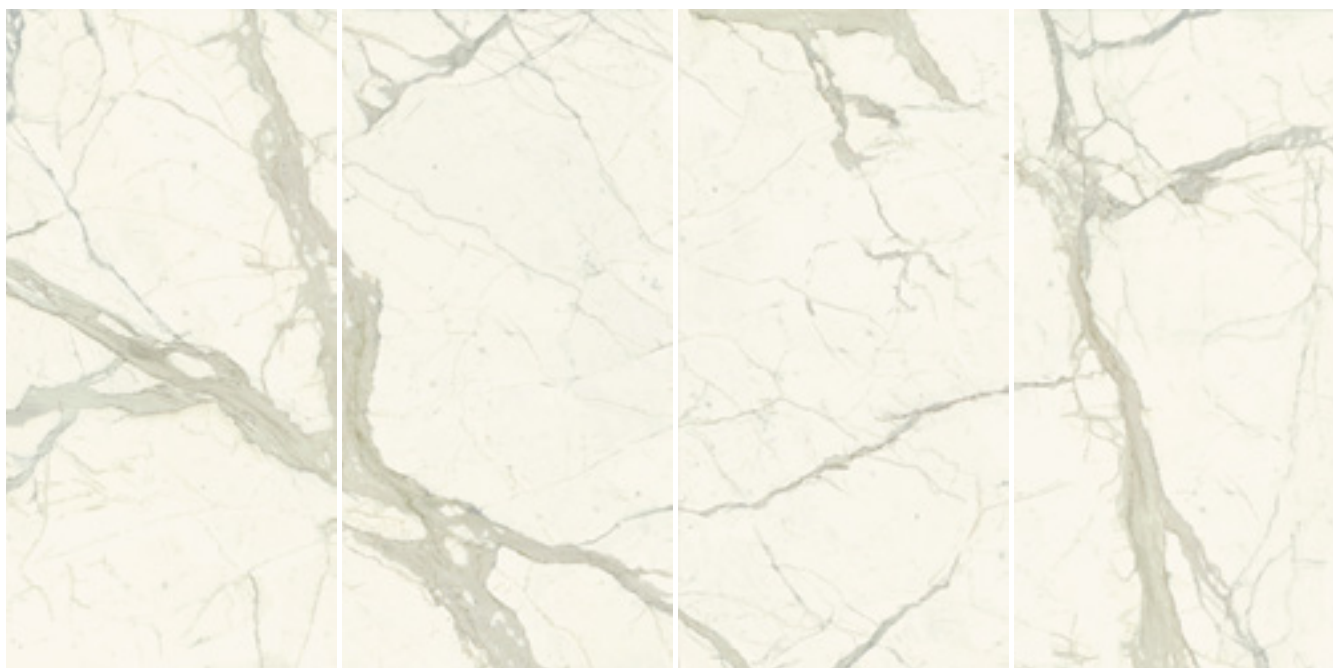


B1

B2

MAXIMUM pressed porcelain technology successfully delivers the highly sought after classic look of Calacatta marble with its distinctive vein structures and soft colours. Available in four vein matched variations and a book matched pair in polished or matt finishes.

MARMI CALACATTA VARIATIONS



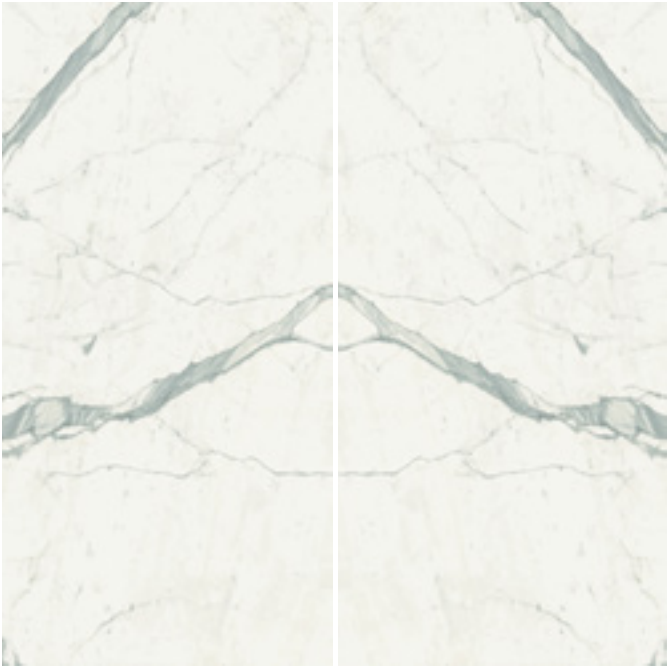
A

B

C

D

MARMİ STATUARIO BOOK MATCHED



B1

B2

The luxurious look of Statuario marble has been beautifully captured with its distinctive cool grey vein structures and sharp white background. Available in four vein matched variations and a book matched pair in polished or matt finishes.

MARMİ STATUARIO VARIATIONS



A

B

C

D



**Bathroom vanity &
Splashback**
Marmi Pietra Grey matt

Soko Sky Homes, Brisbane
Design by Cottee Parker
Developed by Spyre Group



Wall

Marmi Calacatta matt

Moreton Apartment Lobby,
Sydney
Design by Smart Design Studio
Developed by Mirvac

MARMI MICHELANGELO BOOK MATCHED - POLISHED FINISH ONLY



B1

B2

The look of Michelangelo marble is beautifully represented with its off-white background and subtle mid-grey striated veining. Available in four vein matched variations and in polished or matt finishes and a book matched pair in polished finish only.

MARMI MICHELANGELO VARIATIONS



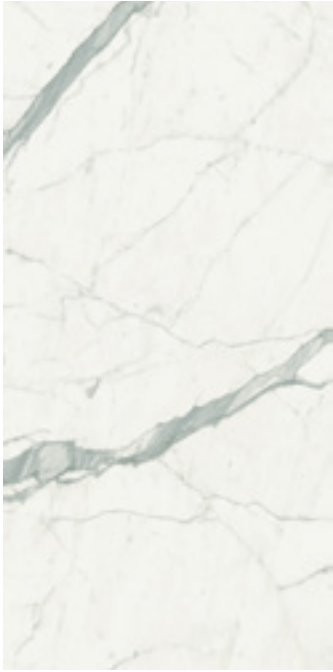
A

B

C

D

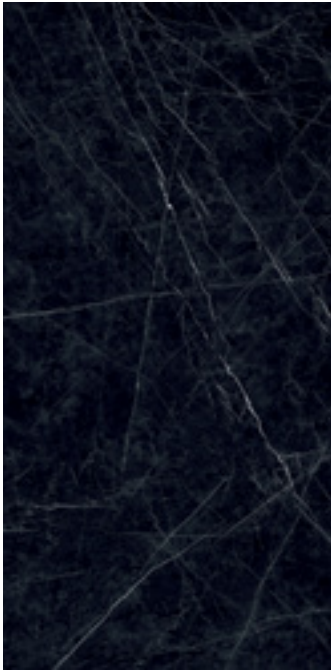




Marmi • Statuario - 6mm & 12mm



Marmi • Nero Supremo - 6mm



Marmi • Marquina - 6mm & 12mm



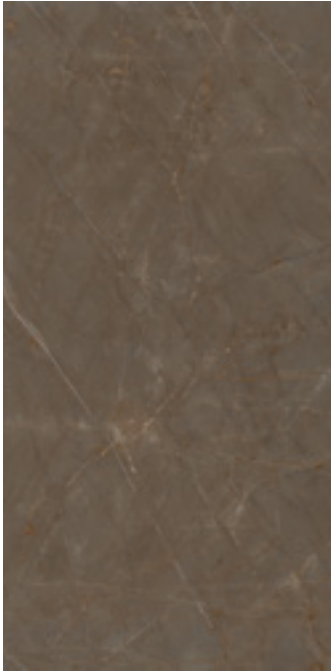
Marmi • Gold Onyx - 6mm



Marmi • Calacatta - 6mm & 12mm



Marmi • Taxos - 6mm



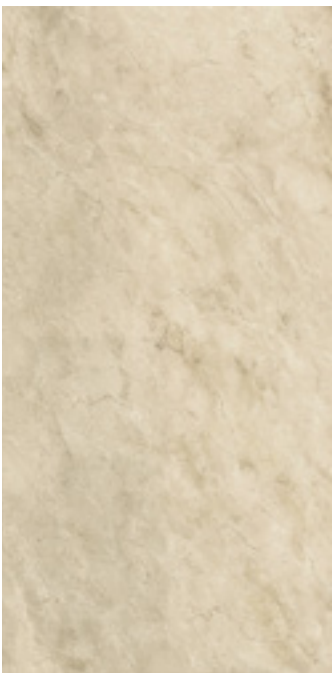
Marmi • Pietra Bronze - 6mm



Marmi • Bright Onyx - 6mm & 12mm



Marmi • Michelangelo - 6mm & 12mm



Marmi • Royal Marfil - 6mm



Marmi • Pietra Grey - 6mm & 12mm



Marmi • Travertino - 6mm

Marmi range
Nominal thickness · 6mm
Slab Size · 3000 × 1500 (4.5m²)
Nominal weight · 6mm - 14.67kg/m²

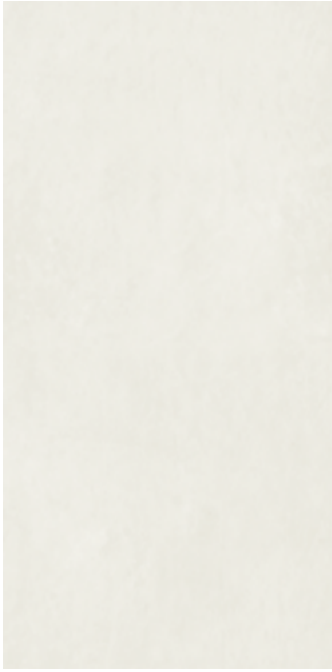
Nominal thickness · 12mm
Nominal panel size · 3200 × 1500 (4.8m²)
Nominal weight · 29.34kg/m²
All 12mm porcelain panels require trimming before processing. All 12mm colours are supplied in one pattern as described. Throughbody veining available in some colours.

COLOURS & FINISHES

From beautiful colours inspired by nature, to the cool contemporary look of concrete, MAXIMUM is available in a wide range of exclusive finishes suitable for interior or exterior applications in both residential and commercial projects.



Aster • Moon - 6mm



Aster • Saturn - 6mm



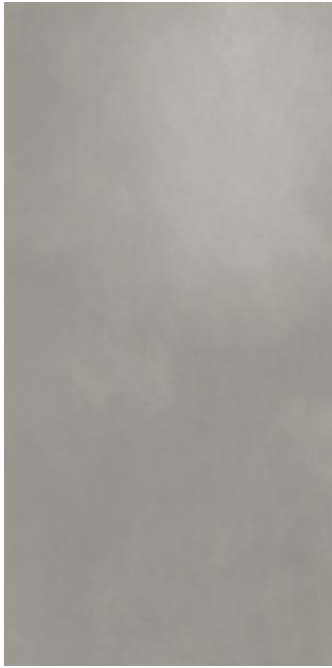
Aster • Mercury - 6mm



Aster • Venus - 6mm



Aster • Neptune - 6mm



Argento - 12mm

Aster range
Nominal thickness · 6mm
Slab Size · 3000 × 1500 (4.5m²)
Nominal weight · 6mm - 14.67kg/m²

Argento
Nominal thickness · 12mm
Nominal panel size · 3200 × 1500 (4.8m²)
Nominal weight · 6mm - 29.34kg/m²

All 12mm porcelain panels require trimming before processing. All 12mm colours are supplied in one pattern as described. Throughbody veining available in some colours.



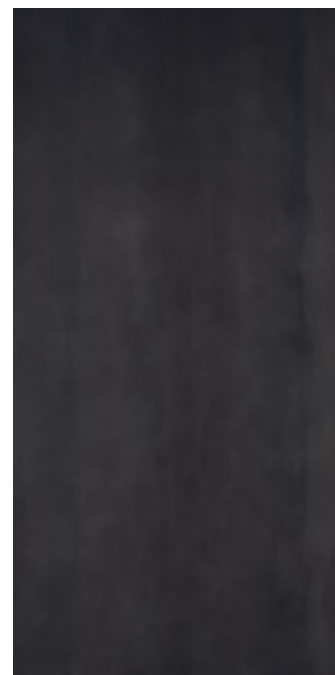


Benchtop & Splashback
Argento 12mm

Magnus Apartments, Brisbane
Design by Cottee Parker
Developed by Pointcorp



Metals • Steel - 6mm & 12mm



Metals • Zinc Titanium - 6mm & 12mm



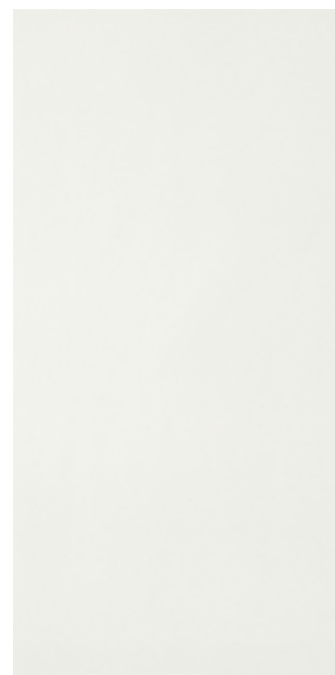
Metals • White Iron - 6mm



Metals • Oxidium - 6mm



Datauni • Pepper - 6mm



Datauni • Ice - 6mm & 12mm

Metals & Datauni ranges

Nominal thickness · 6mm

Slab Size · 3000 × 1500 (4.5m²)

Nominal weight · 6mm - 14.67kg/m²

Nominal thickness · 12mm

Nominal panel size · 3200 × 1500 (4.8m²)

Nominal weight · 29.34kg/m²

All 12mm porcelain panels require trimming before processing. All 12mm colours are supplied in one pattern as described. Throughbody veining available in some colours.

FABRICATION NOTES

Benchtop and splashback installation tips for achieving the best results.

- 1. Handling Material** - Take care during transit. For benches with cutouts, lay bench against a solid substrate such as MDF or similar, ensuring that backing support is at least 2cm larger than the bench-top. Strap, clamp or tape both together, so handling will be easier and to avoid potential damage. Always carry panels edge on i.e. vertically, not horizontally.
- 2. Substrate** - When selecting a substrate for benchtops always use a rigid and continuous moisture-resistant substrate such as CFC, FC or other. Ensure that the substrate has no flex. Do not install MAXIMUM panels over timber support bench battens without a suitable substrate.
- 3. Adhesives** - The fabricator or installer should use the following recommended adhesives for substrates and mitres. Mapei Keralastic, Mapei G19 or T-Rex for adhesion to substrates. Apply adhesive to substrate as per manufacturer's guidance. Always lightly skim adhesive to the rear of the panel. 100% adhesive coverage for benchtop substrates and splashbacks is strictly required. **Always respect manufacturer's curing times for adhesives before completing further works such as coring holes or working above the finished MAXIMUM installation.** For mitre joints, Akemi Akepox 5010 epoxy adhesive has excellent adhesion for porcelain.
- 4. Overhangs** - Unsupported overhangs should be minimized. A flush finish to benches or maximum 20mm overhang with angle support is recommended. If larger overhangs are required for island benches, use a suitable support substrate to minimise any potential damage to material due to heavy impact or flex. Substrate must be rigid.
- 5. Under-mounted Sinks** - If the sink is under-mounted, do not adhere sinks to underside of porcelain only. The sink or basin must be fully supported by the substrate. It is essential to avoid over tightening tap fittings. Ensure that MAXIMUM sits flush to the substrate edge and that porcelain and substrate both support the tap base and housing. A solution for fitting taps is to fix the tap base housing direct to the substrate, which means enlarging the hole so that the tap base can be recessed (ensure that silicon is used to prevent moisture ingress). Only use silicon to adhere sink lip (aluminum or stainless element) to MAXIMUM (due to thermal movement of metal) and adhesive to fix MAXIMUM to substrate. Ensure that the silicon and adhesive sit at the same level and thickness.
- 6. Top-Mounted Sinks** - If the sink is top mounted ensure that MAXIMUM sits flush to edge of substrate. Maximum to be completely adhered to the substrate. Substrate to support sink weight.
- 7. Cut outs for sinks or cook tops** - Cut outs should have rounded internal corners (min. 10mm radius) to prevent radial cracking. Specifically, items like shower niches, fireplaces etc. where the porcelain might be expected to return in from one or more faces with a mitred or butt joint. It is essential that the face panel is sectioned around this type of opening to avoid stress points in the product, where subsequent movement in the structure may cause a fracture. We recommend a minimum 80mm to any panel edge from cook-top or sink cut out. Minimum of 50mm to any edge of tap hole from panel edge or edge of sink.
- 8. Splashbacks** - When adhering splashbacks to the rigid moisture resistant substrate, do not spot fix. Always achieve 100% adhesive coverage.

The fabricator or installer must read the Fabrication & Joinery Installation Manual thoroughly before engaging in installation. To download the Installation Manual or view installation videos, please visit www.maximumaustralia.com. Contact your MAXIMUM distributor for any installation questions.

CARE AND MAINTENANCE

MAXIMUM pressed porcelain panels are stain, scratch and thermal shock resistant; they are also UV resistant, therefore suitable for internal and external use. To ensure that the surface stays in excellent condition it is recommended that all maintenance guidelines are carefully followed.

Stain Resistance – MAXIMUM panels are stain resistant. However, to keep the finish in top condition, normal daily care must be taken to immediately clean up stains and spills, especially on polished surfaces.

Routine Cleaning – Ensure any food products such as red wine, food, oils and drinks are immediately washed away using warm water or with small quantities of a non-bleach or non-abrasive household cleaner. Use a soft non-abrasive cloth. Do not use cleaners that have high alkaline pH levels, such as oven or drain cleaners. Avoid hydrofluoric acid or its compound.

In the unlikely event of a stain, use a nonabrasive cleaning product, sugar soap, normal cream based house cleaning products or bicarbonate soda mixed with warm water. To remove any other hard substances that may adhere to surface always use a plastic scraper to gently remove material. Avoid the use of industrial and harsh chemicals on the surface, such as paints, paint strippers, permanent markers and inks. To remove permanent marker or similar, pour a small amount of Glitz Premium Bleach over the stain only and let it sit for 4 hours or overnight, then wash off with warm water.

Heat Resistance – While MAXIMUM is thermal shock resistant, it is advisable, for safety purposes, to use a heat mat or similar when placing hot pots on the bench.

Minimising Scratches – MAXIMUM panels are scratch resistant, not scratch proof. MAXIMUM will easily withstand daily use. Always use cutting boards when preparing food. Avoid sliding heavy metallic objects along the surface.

General Cleaning – To clean and revitalise MAXIMUM porcelain surfaces, use Glitz Green eucalyptus oil (available from Bunnings). Use a dry soft cloth and gently wipe over the surface.

External Use – MAXIMUM is UV resistant and can be used externally. Follow routine cleaning procedures as you would internally.

For further assistance or advice, please contact your MAXIMUM distributor.

Floor

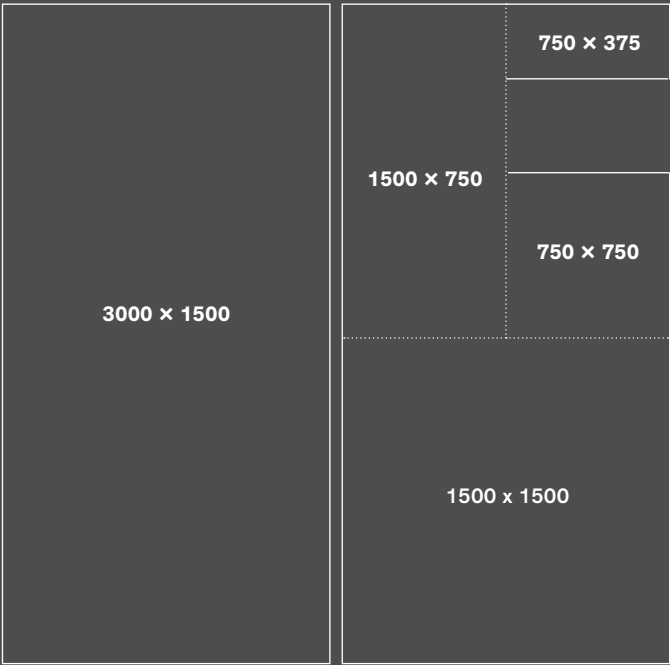
Aster Saturn 6mm

Casa Artedomus, Sydney
Design by The Stella Collective
and Thomas Coward Studio



SPECIFICATIONS

6mm



Nominal thickness
6mm

Panel size
3000 × 1500 (4.5m²)

Nominal weight
14.67kg/m²

12mm



Nominal thickness
12mm

Nominal panel size
3200 × 1500 (4.8m²)

Nominal weight
29.34kg/m²

For detailed individual product specifications, technical data, design inspiration
and more about the MAXIMUM story please visit www.maximumaustralia.com

MAXIMUM[®]
FIANDRE EXTRALITE

maximumaustralia.com